

# Canon

 **Color  
imageRUNNER**  
C3200



**DEPARTMENTAL  
SYSTEMS**





## DEPARTMENTAL SYSTEMS

TRUE MULTIFUNCTIONALITY  
NOW COMES IN COLOR.  
ONLY FROM CANON.

Introducing the  
Color imageRUNNER C3200...  
The ultimate color networked  
digital multifunction device for  
corporate workgroups  
and departments.

In a world filled with information that competes for attention, color in the office is no longer a luxury—it's a standard business tool. And while much of today's business information resides in both electronic and hard-copy format, office workers must communicate and share information faster than ever in order to effectively compete.

This is the time for Canon's newest productivity-enhancing solution—the Color imageRUNNER C3200. Leveraging Canon's Color imagePlatform architecture, the Color imageRUNNER C3200 delivers brilliant color to make you and your organization really shine, plus a full suite of communication functions to meet all your business needs.

The Color imageRUNNER C3200 puts the power of color document creation, distribution, and management where it belongs—in your hands.



## COLOR IN THE OFFICE REVOLUTIONIZED

When your business demands excellence in every facet of your communications, the Canon Color imageRUNNER C3200 delivers.



User-friendly Control Panel

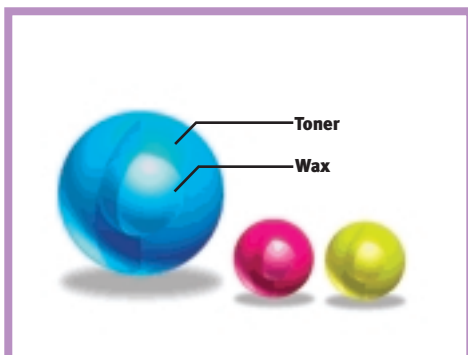
The Color imageRUNNER C3200 is designed to withstand the punishment of busy corporate environments. Easily handling the load of several stand-alone devices, it allows you and your workgroup to maximize performance in a compact, environmentally friendly design.

In one space-saving device, the Color imageRUNNER C3200 can support advanced digital copying and Mail Box features, network printing and scanning functions, plus the ability to easily send information across a diverse and ever-changing digital landscape. With its innovative dual processor design, 768MB RAM, and a 40GB hard disk standard, the system eliminates bottlenecks and improves efficiency without sacrificing speed or image quality—Canon's definition of true multifunctionality.

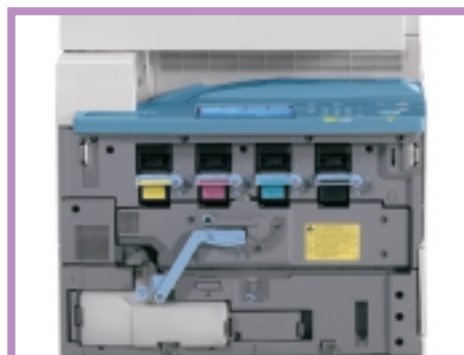
Capturing every detail of your originals with amazing precision, the Color imageRUNNER C3200 processes 23 color pages per minute (36 pages in black-and-white mode) at true 600 x 600 dpi resolution. Incorporating four-drum, single-pass engine technology, the system achieves output speeds of up to 32 pages per minute for both color and black-and-white documents.

Canon's exclusive Super Smoothing Technology supports up to 2400-equivalent x 600-dpi resolution to make every image sharp, every gradation smooth, and every text character crisp. And, Canon's third-generation oil-free S-Toners produce eye-catching color with just a touch of gloss, perfect for office applications.

Best of all, users and administrators are provided all the necessary tools for quick, intuitive operation of all features—whether it be at the device, through a large full-color touch-screen interface panel, or a desktop through Canon-supplied device drivers and utilities.



Canon's S-Toner consists of a wax inner layer and polymer outer layer. The result is smooth images that replicate reality.



The space-saving design of the four-drum, single-pass engine contributes to a compact footprint and easy maintenance.

## COMMUNICATE WITHOUT BARRIERS, SHARE WITHOUT LIMITS... AND MANAGE WITH EASE.

Using the power of corporate networks and the Internet, the Color imageRUNNER C3200 allows users to deploy all forms of information with unprecedented speed and unparalleled convenience.

### Universal Send™—An All-terrain Vehicle for the Information Super Highway.

With optional Universal Send technology, the Color imageRUNNER C3200 allows workgroup users to distribute information to multiple destinations, including individual or groups of E-Mail and Internet fax (I-fax) addresses, an internal Mail Box, network or host folders and files, document management applications such as Canon's imageWARE™ Document Manager, or as Super G3 fax transmissions (optional). This eliminates the expense and administrative burden associated with printing, filing, and forwarding documents through conventional methods.

When sending information, users may enter destination addresses at the touch-screen or access the system's high-capacity Address Book feature. With LDAP (Lightweight Directory Access Protocol) support, you can even search for destinations on a corporate LDAP server for added convenience.

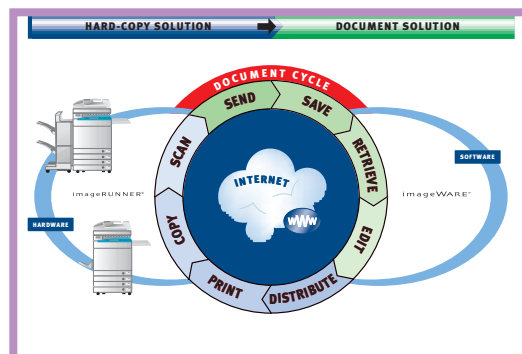
### eCopy Makes Enterprise-wide Document Distribution Easier Than Ever.

With the optional eCopy Suite of products and the high-speed scanning capability of the Color imageRUNNER C3200, anyone in your organization can transform paper documents into information that easily integrates into all business applications. eCopy connects with your company's E-mail and other networked enterprise applications for secure, low-cost, instantaneous distribution and management of information.

### File Type Flexibility

When sending documents from the Color imageRUNNER C3200 through Universal Send or eCopy Suite, users may select from several industry-standard formats to ensure that documents can be viewed and printed easily by any recipient. Both systems employ high-compression technology that allows even complex color pages to be efficiently handled over the network, without affecting image/text legibility. So your communications can have minimal impact on network performance and maximum impact on your audience.

Universal Send Main Menu



eCopy ShareScan™ Main Menu





## WORKFLOW MANAGEMENT MADE EASY

The Color imageRUNNER C3200 is the do-it-all system that will simplify your workday and streamline your workflow.

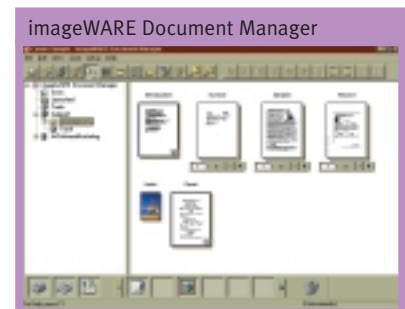
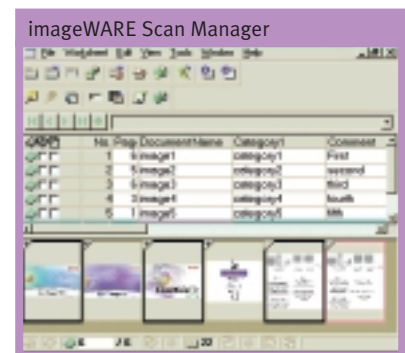


### Integration with Canon imageWARE™ Office Software Suite

Integrate the powerful scanning capabilities of the Color imageRUNNER C3200 with Canon's imageWARE Office Suite for a comprehensive information-capturing, management, and distribution system.

With the automatic scanning and indexing capabilities of imageWARE Scan Manager, your business can capture and convert high volumes of documents into digital data quickly and easily. Imagine reducing manual labor costs related to scanning by more than 20% and document indexing time by more than 50%! Advanced image capture and data recognition improves the accuracy and usefulness of digitized, computer-based information.

Canon's imageWARE Document Manager is a central database repository of the imageWARE Suite and has a client-server architecture that can be scaled to meet growing business needs. It is designed to reduce or replace traditional hard-copy document storage methods in general office environments, supporting applications for retrieval, archival, and records management.



### Key Vertical Market Applications

#### Human Resources Department

- Scan and store applications and forms at the device or in a shared network folder.

#### Engineering/Construction Firms

- Scan and send blueprints, site surveys, job site photos in full color.

#### Healthcare Industry

- Scan and store patient records, insurance forms, and prescription information in a secure database.



## ADVANCED FEATURES THAT WILL ADVANCE YOUR PRODUCTIVITY

In addition to its many unique features, the Color imageRUNNER C3200 provides considerable flexibility, from simple to advanced productivity-enhancing digital copying features.

**Scan-Once-Print-Many:** Makes copies from images that were scanned into memory, which results in greater productivity and reduced scanner wear and tear.

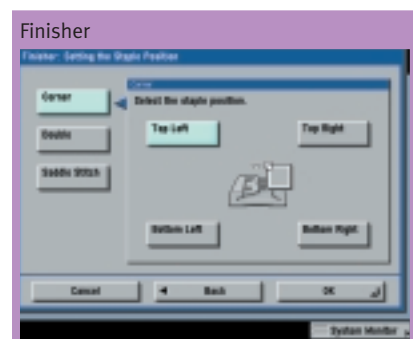
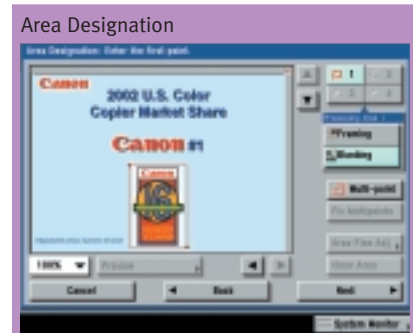
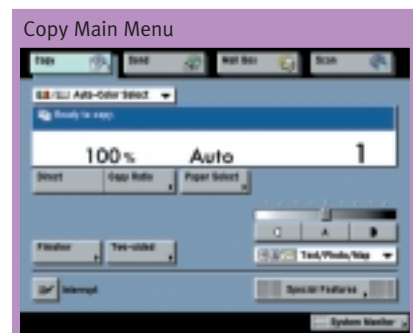
**Full Concurrency:** Elevates multifunctional performance by synchronizing scanner, image processor, and print engine operation. As an example, you can store up to five copy jobs in memory even while the system is processing other jobs.

**Job Done Notification:** Tired of waiting at the copier? The system can send an E-mail notification when your job is complete so you're free to do other tasks (also works with the Send function).

**Job Build:** Allows you to build from disparate originals, efficiently integrating documents scanned from the document feeder with those placed directly on the platen glass. Also allows you to process jobs that exceed the capacity of the feeder.

**Booklet Modes:** You can create professional-looking booklets, with optional saddle-stitched output, in-house—eliminating outsourcing expenses.

**Area Designation:** You can scan images and perform basic Framing and Blanking functions right from the color LCD panel.



DO MORE WITH LESS...LESS HEADACHES,  
LESS DOWNTIME, LESS HASSLE.

The Color imageRUNNER C3200 hosts a number of memory-enabled Mail Box functions that allow for greater document storage, creation, and manipulation capabilities.

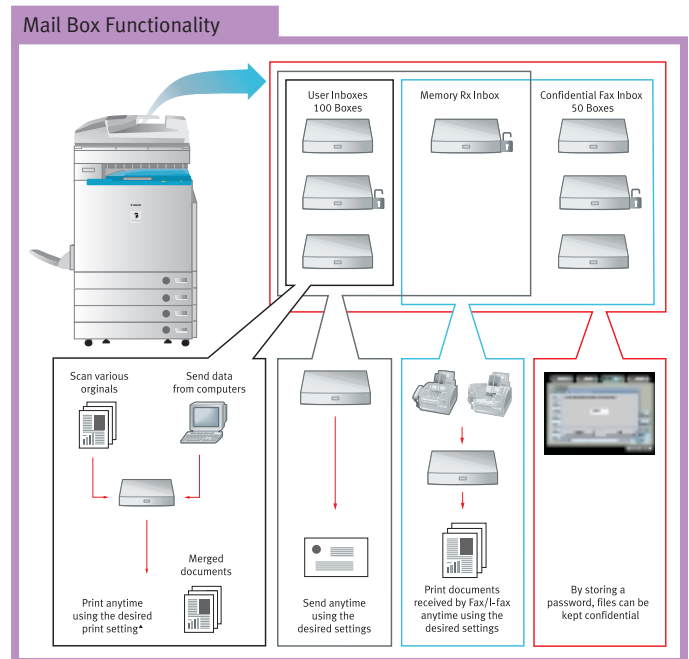
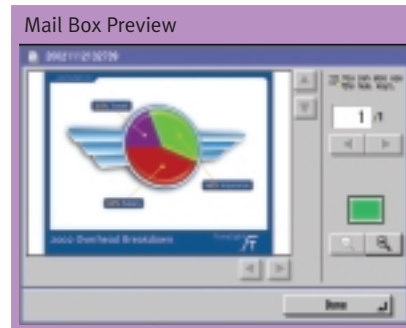
### Mail Box Features

Not only can the Color imageRUNNER C3200 scan and send documents to external storage destinations, it can also store them internally in a dedicated portion of the system's digital memory. This value-add capability allows the Color imageRUNNER C3200 to serve as a virtual document repository at no additional cost.

You can organize, name, and password-protect up to 100 User-inboxes by employee, project, department, or document type for easy identification and security, whatever works best for your business.

Documents can be sent directly to the Mail Box by scanning them and selecting the desired destination, or through the optional Universal Send function. You can even send documents to a Mail Box from your computer with the appropriate Print Driver. Users can then view stored images from a connected PC via a Web browser or at the system's full-color LCD panel. Later, you can access or delete files, merge them with other documents, and print them with the desired settings.

What's more, the Color imageRUNNER C3200's Mail Box function offers a Memory Reception Inbox and 50 Confidential Fax Inboxes for secured receiving of inbound documents.



\*Some functions are not available when printing documents that are sent from a computer.

## Key Vertical Market Applications

### Executive Offices

- Send confidential information to a personal Mail Box for printing later.

### Financial Offices

- Combine scanned images with spreadsheets and files created in different applications for professional-looking reports.

### Administrative Personnel

- Scan and store frequently used forms and print them in the quantity you need, at the point and time you need them.

## ALL THE TOOLS TO SIMPLIFY YOUR JOB.

The Color imageRUNNER C3200 is a document distribution and production powerhouse that provides the versatility you require to communicate across the room or across the globe.

### A New Level of Printing Flexibility

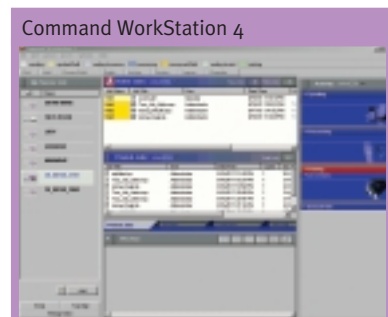
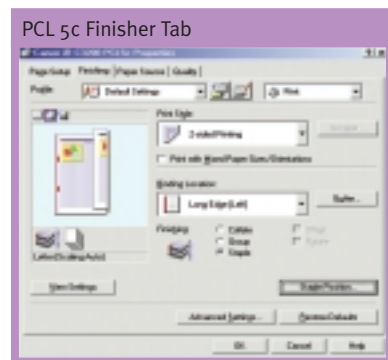
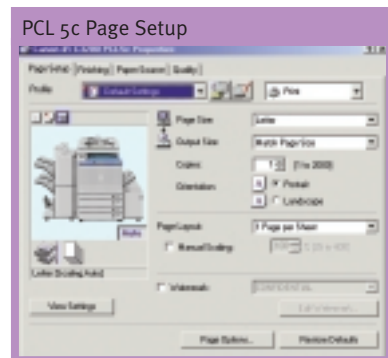
When it comes to printing, nobody does it better than Canon, and no other solution gives you more flexibility than the Color imageRUNNER C3200.

You may choose from two print controller options—the Canon-designed Color Network Multi-PDL Printer Kit-A1 or the imagePASS-C1, co-engineered by Canon in partnership with Electronics for Imaging (EFI).

The Color Network Multi-PDL Printer Kit-A1 delivers color printing capabilities best-suited for general office environments, with support for PCL 5c and PostScript® 3™ emulation, and Canon's proprietary new Ultra Fast Rendering\* (UFR) technology. Canon's new UFR technology utilizes a newly invented printing algorithm to minimize file processing time and achieve maximum performance.

For higher bandwidth printing requirements, the imagePASS-C1 features its own hardware dedicated to printing applications, with support for genuine Adobe® PostScript 3 and PCL 5c emulation. You can also benefit through the value-added capabilities of EFI's Command WorkStation™ utilities.

Through intuitively designed print drivers, you can start the document creation process right from your desktop with the ability to access page layout, document finishing, and image quality settings. Whichever print controller option you choose, you'll benefit from maximum image quality and system performance.



\*Available for Windows® 98/2000/XP/Me Operating Systems.



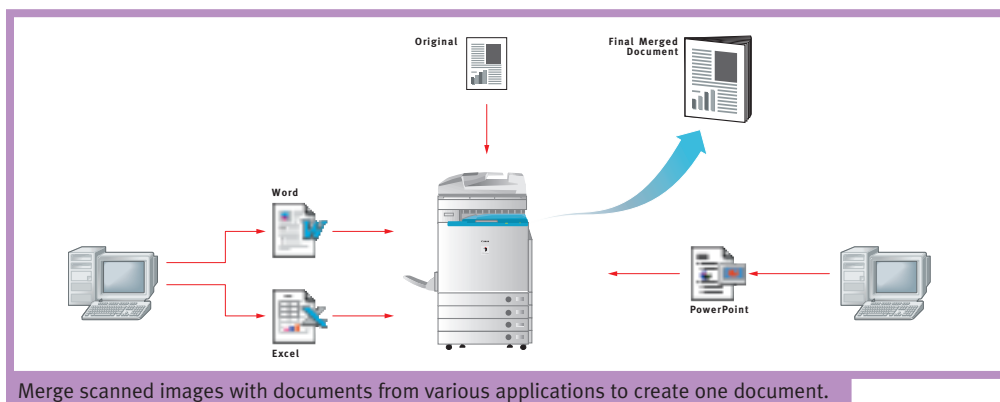
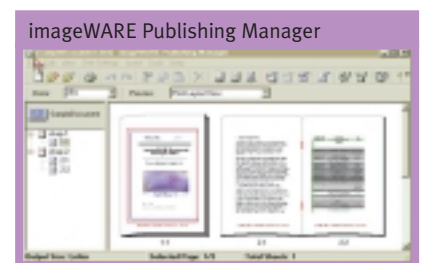
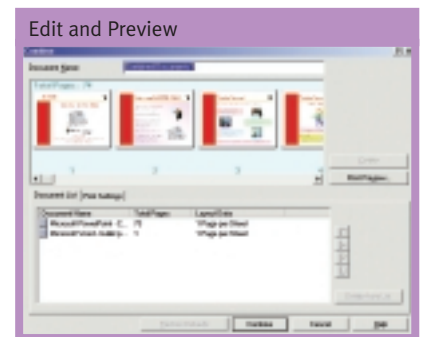
IT'S NOT JUST ABOUT WHAT THE SYSTEM CAN DO; IT'S ABOUT WHAT THE SYSTEM CAN DO FOR YOU, TOO.

The Color imageRUNNER C3200 is equipped with extensive capabilities not found on dedicated, single-function color laser printers. Some of these enhanced capabilities include:

- **Secure Print:** Permits entry of a confidential PIN from within the print driver. Printing will begin only upon entry of the confidential PIN at the device.
- **Store (to a Mail Box):** Users can send print jobs to a personal Mail Box for integration with other print or scanned data, thereby creating new compound documents.
- **Edit and Preview (Page Composer):** Users can combine and print documents that were created in different applications as a single document, preview and manipulate the merged file through a thumbnail view, and change settings on-the-fly.

#### imageWARE Publishing Manager Integration

Canon's imageWARE Publishing Manager is a user-friendly desktop publishing and output optimization tool for the general office. It simplifies the production of professional-looking documents requiring various inserts and content types, such as manuals, brochures, catalogs, proposals, reports, books, and presentations. With Publishing Manager, users can combine multiple documents created in different applications to form a single document.



Merge scanned images with documents from various applications to create one document.



## CONTROL AND MANAGE RESOURCES FROM ANYWHERE

Like all Canon networked systems, the Color imageRUNNER C3200 comes equipped with a comprehensive set of utilities and features designed to simplify operation, management, and security.

### Department ID Mode/Control Card

Enable the Color imageRUNNER C3200's Department ID mode and access to the system can be limited to those users assigned valid IDs and passwords. Set volume ceilings, and restrict or enable access to color and black-and-white copy, scan, and print functions for up to 1,000 departments or users. The optional Control Card/Card Reader System manages populations of up to 3,000 departments or users through the use of intelligent cards that must be inserted in the system before granting access to functions.

### imageRUNNER® Security Kit

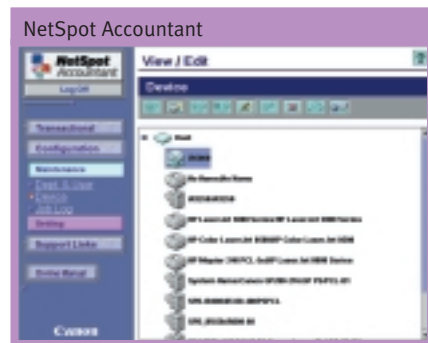
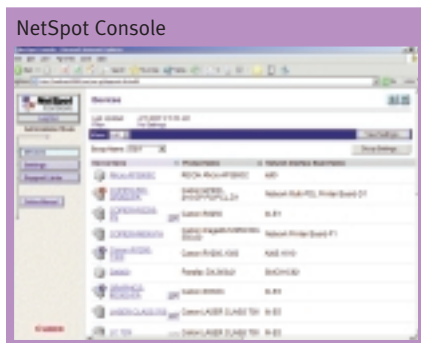
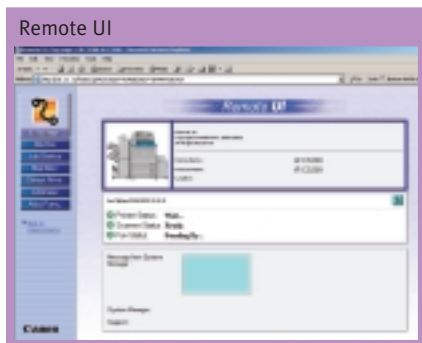
Your corporate information is a vital asset and one that should be protected at all times. In addition to password protection against unauthorized internal access, you need protection against external threats. For this reason Canon offers the imageRUNNER Security Kit, a software package that initiates the overwriting of hard disks and completely erases previously stored data to safeguard critical information and protect corporate interests.

### Remote UI™

This preinstalled utility enables end-users to check system status and configuration, access Mail Boxes, view stored documents, and more, using only a standard Web browser. Simply input the IP address of the target device, and real-time system information is at your fingertips. Remote UI enables administrators to import and export detailed device settings and Address Books to and from another Color imageRUNNER C3200. As a result, configuring multiple units over the network has never been easier.

### NetSpot® Suite

To truly support customer requirements, networked devices must be easy to install, seamlessly integrate with existing network management applications, and permit management from anywhere in the enterprise. Canon's comprehensive solution to these customer requirements is embodied within Canon's NetSpot Suite. This is a group of software utilities designed to ease the administrative burdens associated with installing, monitoring, and managing Canon and third-party print devices on corporate enterprise networks.



## STREAMLINE AND SAVE TIME

Make paper-handling chores a snap and give every document a professional look with the Color imageRUNNER C3200's versatile document-handling and finishing capabilities.

### Automate Your Business

The optional Duplexing Automatic Document Feeder (DADF-K1) can reduce paper-handling chores and increase your productivity. It automatically feeds up to 30 one- or two-sided originals. Plus, with Job Build, you can process jobs that exceed the capacity of the feeder, as well as integrate documents scanned through the feeder with those placed on the platen glass.

The Color imageRUNNER C3200 features dual 550-sheet front-loading Paper Cassettes that are user-adjustable, and can accommodate paper sizes up to 12"x 18" in weights of up to 110 lb. Index. For increased paper versatility, you can add two more 550-sheet cassettes and a 2,700-sheet paper deck for uninterrupted productivity. What's more, the standard 100-sheet Stack Bypass tray gives you the convenience of copying on stocks as large as 12.6" x 18" and in weights of up to 140 lb. Index (including tab paper, envelopes, and prepunched paper).

There's a choice of three output options to fit every need and budget. From simple collating and stapling to advanced saddle-stitched booklets, the Color imageRUNNER C3200 automates every step of the document-finishing process. All available finishing modes are accessible to every user for every job. Just one more way Canon technology works for you.

### Image of a Leader

As the leading producer of network-connected multifunction devices in the industry, Canon continues to set new standards for quality, performance, and reliability. That's why you can trust Canon to provide you with solutions to make your department more productive, and any business more competitive.

Duplexing Automatic Document Feeder (DADF-K1)

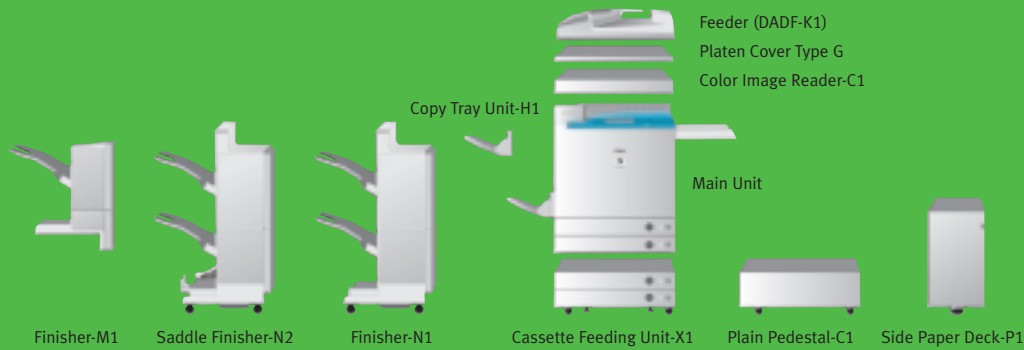


Paper Sources



Saddle Finisher-N2





## Color imageRUNNER C3200 Specifications

Technology:	Laser Electrostatic Transfer System
Developing System:	Dry Dual Component Developing System
Acceptable Originals:	Sheets, Books, 3-dimensional Objects (Up to 4.4 lb./2kg)
Max. Original Size:	11" x 17" (Ledger)
Copy/Print Sizes	
Cassette-feeding:	Executive, Statement-R, Letter-R Letter, Legal, 11" x 17", 12" x 18" Letter
Optional Paper Deck:	
Stack Bypass:	3-5/16" x 5-7/8" to 12-5/8" x 18" (100mm x 148mm to 320mm x 457mm)
Magnification	
Standard Mode:	100%
Preset Reduction:	25%, 50%, 64%, 73%, 78%
Preset Enlargement:	121%, 129%, 200%, 400%
Zoom Mode:	25% - 400% (in 1% Increments)
Copy/Print Speeds (Letter):	32 ppm (Color and B/W)
First-copy Time:	13.1 Seconds (Color) 9.8 Seconds (B/W)
Warm-up Time:	6 Minutes Max. After Powering On (68° F/20° C) 6 Minutes From Sleep Mode (Approx.) 30 Seconds From Low-power Mode
Image Server Memory:	Standard 768MB RAM/40GB HDD
Resolution:	600 dpi x 600 dpi (Scanning) Up to 2400-dpi equivalent x 600 dpi (Printing)
Halftone:	256 Gradations
Copy Exposure:	Automatic or Manual (9 Levels)
Paper-feeding	
Standard:	Dual 550-sheet Paper Cassettes (1,100 Sheets; 20 lb. Bond/80gsm) Stack Bypass (100 Sheets; 20 lb. Bond) Dual 550-sheet Paper Cassettes (1,100 Sheets; 20 lb. Bond) Paper Deck (2,700 Sheets; 20 lb. Bond)
Optional:	
Acceptable Paper Weights	
Cassettes:	17 lb. Bond to 110 lb. Index (64gsm - 209gsm) and Transparency
Stack Bypass:	17 lb. Bond to 140 lb. Index (64gsm - 253gsm) and Transparency
Duplexing:	Standard Automatic Trayless Duplexing
Max. Mail Boxes Supported:	100
Max. Copy Reservation:	5
Multiple Copies:	1 to 999
Network Interface:	10/100 Base-T (RJ-45)
Optional Send Functions	
Sending Methods:	E-mail, I-fax, Super G3 Fax (Optional) File Server (IPX, FTP, SMB)
Address Book Capacity:	1,800
File Format:	B/W: TIFF, MTIFF, PDF Color: JPEG, PDF
Sending Sizes:	Statement to 11" x 17" 120V AC, 60Hz, 15A
Power Source:	

Dimensions (H x W x D) (Printer and Reader):	31-1/2" x 24-3/8" x 31" (799mm x 620mm x 786mm)
Weight (Printer and Reader):	Approximately 277 lb. (126kg)
<b>Accessories</b>	
<b>Duplexing Automatic Document Feeder-K1 (Optional)</b>	
Acceptable Originals:	Statement to Ledger
Acceptable Paper Weights:	14 lb. Bond to 28 lb. Bond (52gsm to 105gsm) Statement-R, Letter-R, Letter - 30 Sheets (20 lb. Bond) Legal, 11" x 17" - 15 Sheets (20 lb. Bond)
Tray Capacity:	
<b>Cassette Feeding Unit-X1 (Optional)</b>	
Paper Capacity:	Dual 550-sheet Paper Cassettes (1,100 Sheets; 20 lb. Bond)
Acceptable Paper Sizes:	Executive, Statement-R, Letter-R Letter, Legal, 11" x 17", 12" x 18"
Acceptable Paper Weights:	17 lb. Bond to 110 lb. Index
<b>Side Paper Deck-P1 (Optional)</b>	
Paper Deck Capacity:	2,700 Sheets (20 lb. Bond)
Paper Size:	LTR
Acceptable Paper Weights:	17 lb. Bond to 110 lb. Index
<b>Finisher-M1 (Optional)</b>	
Number of Trays:	1 Tray
Tray Capacity	
No Collating, Collate and Group Mode:	1,000 Sheets (Statement-R, Letter-R, Letter) 500 Sheets/30 Sets (LGL, 11" x 17", 12" x 18") 30 Sets (Letter-R, Letter, Legal, 11" x 17") 30 Sheets (Letter, Letter-R), 20 Sheets (Legal), 15 Sheets (11" x 17")
Staple Mode (Corner):	
Max. Stapling Capacity:	17 lb. Bond to 140 lb. Index
Acceptable Paper Weights:	
<b>Finisher-N1 and Saddle Finisher-N2 (Optional)</b>	
Number of Trays:	2 Trays
Tray Capacity	
No Collating, Collate and Group Mode:	1,000 Sheets (Statement-R, Letter) 500 Sheets/30 Sets (Letter-R, Legal, 11" x 17", 12" x 18") 300 Sheets (Mixed Sizes) 750 Sheets/30 Sets (Letter) 500 Sheets/30 Sets (Letter-R, Legal, 11" x 17") 150 Sheets/30 Sets (Mixed Sizes)
Staple Mode:	
Max. Stapling Capacity:	50 Sheets (LTR), 30 Sheets (Letter-R, Legal, 11" x 17", 17 lb. to 20 lb. Bond) 17 lb. Bond to 140 lb. Index
Acceptable Paper Weights:	
Available Staple Size	Letter-R, Letter, Legal, 11" x 17"
Corner Stapling:	
Double Stapling:	Letter, 11" x 17"
Saddle Stitching	
Acceptable Paper Sizes:	Letter-R, 11" x 17"
Capacity/Tray:	1 to 5 Sheets/25 Sets; 6 to 10 Sheets/15 Sets; 11 to 15 Sheets/10 Sets

Max. Stapling Capacity/Set:	15 Sheets
Folding:	V-fold
<b>Color Network Multi-PDL Kit-A1 (Optional)</b>	
Type:	Embedded Print Controller
Processor:	Dual Canon Custom Processor 250MHz—Shared 768MB (Std./Max.)—Shared
RAM:	40GB—Shared
Hard Disk:	UFR, PCL 5c, PostScript 3 Emulation
PDL Support:	
Interface	
Standard:	10/100 Base-T (RJ-45)
Optional:	Token Ring, USB Full-speed (1.1 Equivalent)
Attachable Accessories:	USB Interface Board-A1 Token Ring Network Interface Adaptor iN-TR2
<b>imagePASS-C1 (Optional)</b>	
Type:	External (Back-mount) Print Controller
Processor:	Intel® Mobile Pentium® III 850MHz
RAM:	128MB Standard, 256MB Max.
Hard Disk:	10GB
PDL Support:	PCL 5c, Adobe PostScript 3, PDF 1.3, TIFF 6
Interface	
Standard:	10/100 Base-T (RJ-45), Parallel Port (Type B Connector)
Optional:	Token Ring
Utilities	
Standard:	WebTools™, Command WorkStation 4, Fiery® Downloader™, Fiery Driver™, Fiery Remote Scan, ColorWise Pro Tools, Fiery FreeForm™, Auto Trapping/Spot-On™, DocBuilder Pro™, Densitometer
Optional:	Token Ring Board-TB84
Attachable Accessories:	
<b>Other Optional Accessories and Utilities</b>	
Image Reader-C1*	
Super G3 Fax Board-M1	
Color Universal Send Kit-A1P	
Resolution Switching Board-A1	
USB Interface Board-A1	
Token Ring Network Interface Adaptor iN-TR2	
Plain Pedestal-C1	
Copy Tray Unit-H1	
Token Ring Board-TB84	
imageRUNNER Security Kit-A1P	
Key Switch Unit-A1	
Platen Cover Type G	
Card Reader-D1	
Card Sets	
imageWARE Suite	
NetSpot Suite	
eCopy Suite	
*Standard with copier model.	
For more information, please contact your local Canon-authorized dealer.	

**Canon** KNOW HOW®

eCopy ShareScan is a trademark of eCopy, Inc. Adobe and PostScript are registered trademarks of Adobe Systems Incorporated in the United States and/or other countries. Windows is a registered trademark of Microsoft Corporation in the United States and/or other countries. Fiery is a registered trademark of Electronics for Imaging, Inc. in the U.S. Patent and Trademark Office and certain other foreign jurisdictions. Command WorkStation, DocBuilder Pro, Spot-On, WebTools, Fiery Downloader, Fiery Driver, and Fiery FreeForm are trademarks of Electronics for Imaging, Inc. Intel and Pentium are registered trademarks of Intel Corporation. Canon, NetSpot, and Canon Know How are registered trademarks, and Universal Send and the GENUINE logo are trademarks of Canon Inc. IMAGERUNNER is a registered trademark of Canon Inc. in the U.S. and Canada. Remote UI and IMAGEWARE are trademarks, and IMAGEANYWARE is a service mark of Canon U.S.A., Inc. All other terms and product names may be trademarks or registered trademarks of their respective owners, and are hereby acknowledged.

All specifications are subject to change without notice.

Federal Law prohibits copying of certain documents. Violators may be subject to penalties. We suggest that you check with your own legal counsel. Canon U.S.A., Inc. and Canon Canada, Inc. intend to cooperate with Law Enforcement Agencies in connection with claims of unauthorized copying.

0038W068

0803-CIRC3200-100M



PRINTED ON RECYCLED  
PAPER IN THE U.S.A.



1-800-OK-CANON  
www.usa.canon.com

Canon U.S.A., Inc.  
One Canon Plaza  
Lake Success, NY 11042